

LPS System *Lithium*

Decentralized Low Power System (LPS System) series Safety-Line

To supply emergency luminaires within a fire area with power according to DIN EN 50171. For the connection of up to 80 luminaires in standard- and mixed operation system. Connectable load max 200 W

FEATURES

- 5 Inch Touchscreen-Display
- Intuitive operation via Touch-Display
- Connectable load max. 200 W 4 circuits each with max. 120W
- Double terminal for each circuit
- For the connection of up to 80 luminaires in standard- and mixed operation system Combi housing with battery compartment
- 8 switching inputs freely programmable (4 x 230VAC – 4 x potential free)
- 4 relay outputs freely programmable
- USB interface for keyboard, mouse or USB memory stick
- TCP / IP interface for networking or visualization
- HDMI port for display of the visualization on a external monitor
- Easy commissioning of the system via menu navigation
- Switching of individual luminaires or groups of luminaires via switching inputs
- Simple but powerful automatic luminaire search
- Automatic test with monitoring of the luminaires
- Integrated test book
- Password protection on several plains Easy connection via plug-in terminals
- **with Lithium LFP Battery 12V 17Ah**

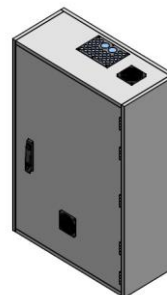


Type	Battery 24V	Connectable load max incl 25% Ageing reserve			Dimension HxWxD in mm	Weight with Battery
		1h	3h	8h		
LPS 24- 0	ohne				700 x 455 x 190	17,7 Kg
LPS 24-17	17Ah	200W	90W	22W	700 x 455 x 190	22,1 Kg
LPS 24-34	44Ah	200W	180W	50W	700 x 455 x 190	26,5Kg

Option: E30

Weight: 122 Kg (without LPS)

Dim.: 1028 x 728 x 335mm



LPS System *Protect*

Installation of the LPS system in a housing with the degree of protection IP 54 for:

LPS24-0, LPS24-12, LPS24-24, LPS24-36, LPS24-48, LPS24-500-48 and LPS24-500-100



Can be used

Dimension for LPS24-0, LPS24-12, LPS24-24, LPS24-36, LPS24-48, LPS24-500-48

Dimension (HxWxD): 705x478x166mm
Weight (without Batterie):17Kg



Dimension for LPS 24-500-100

Dimension (HxWxD): 1100 x 478 x 166mm
Weight (without Batterie):17Kg

Options

Signaling and remote Control Panel according DIN EN 50172 (VDE 0108-100) for displaying ready, battery operation and fault as well as a key switch.

Technical data

Supply voltage: 24 VDC
Connection: 6pol cable
Color: pure white (similar to RAL-No.: 9010)
Dimension (HxWxD): 60x60x44,5mm
(Suitable for Surface mounting and flush mounting)



Signaling and remote Control Panel according DIN EN 50172 (VDE 0108-100) for displaying ready, battery operation and fault as well as a key switch.

Supply voltage: 24 VDC
Connection: 6pol cable
Color: pure white (similar to RAL-No.: 9010)
Surface mounting Dimension
Dimension (HxWxD): 83x83x52mm
Flush mounting
Dimension (HxWxD): 83x83x35mm



BMT - Bus-compatible signaling and remote Control Panel according DIN EN 50172 (VDE 0108-100)

Never lose a key again! The panel is operated via buttons that are protected against unauthorized switching by a security code.

The signal reading is connected via the 4-wire RS485 bus

Up to 5 BMT can be operated in parallel on one system

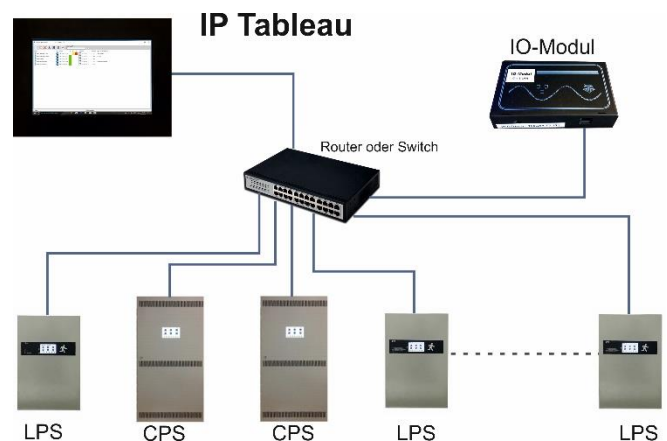
LED indicator: emergency light blocked, system ready, fault, battery operation, DS On
Keys for: emergency light blocked, permanent lights On/Off, Alarm Off, Code Input
Acoustic message: In case of fault (can be switched off)

CPS-LPS Manager software for networking and visualization of up to 253 LPS and CPS devices

- Remote control of the systems
- Display of system status, error messages and all relevant operating data
- Programming of the systems
- Automatic programming and installation
- Optional email dispatch in case of malfunctions
- Optional acoustic message in case of faults
- Notification on background operation (Notify)
- Connection via LAN or WLAN
- Networking via existing LAN network or simple networking via switch
- Easy installation through automatic Scan of all connected devices
- Direct access to any device
- Connection to any device possible via the integrated Visu software
- High security - data exchange only via password protected port (SSH)
- Sorting of the list according to all fields possible
- Option: Connection of IO module

IP panel for networking and visualization of up to 253 LPS and CPS devices

- 10,1" Touchscreen Display
- Ultra-thin steel-sheet housing
- Networking of up to 253 systems
- Remote control of systems
- Display of the system status, error messages and all important operating data
- Programming of the LPS systems
- Reading the memory of each system
- Reading the test books of each system
- Automatic programming and installation
- Email in case of errors
- Notification for background operation
- Connection via LAN or WLAN
- Networking via existing LAN network or simple networking via switch
- Simple installation by automatic scanning of all connected devices with designation
- Direct access to every system
- High security – data exchange only via password-protected port (SSH)
- Also available as software for a Windows Computer



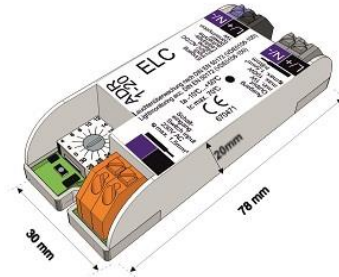
Technical data

Connection: LAN / WLAN
 Color: black
 Housing: steel housing
 Dimension (HxWxD): 330mm x 215mm x 15mm

Monitoring module for mixed operation and single light monitoring Type: ELC

Technical data:

Input:	230V AC/DC
Output:	1W – 100W
Switch input:	230V AC
Ambient temperature:	-10°C to 50°C
Address range:	1 – 20
Protection class:	2
Protection:	IP 20
Cable cross-section:	max. 1,5mm ²



Monitoring module for mixed operation and single light monitoring Type: ELC - DALI

The ELC-DALI monitoring module is used to implement mixed operation and individual luminaire monitoring. All operating modes are assigned by the control unit without interfering with the luminaire installation. The DALI or DIM control is interrupted in emergency lighting mode and luminaires are switched on to the emergency lighting value set on the DALI ECG

Technical data:

Housing Material:	Plastic
Input:	230V AC/DC
Output:	1W – 100W
Ambient temperature:	-10°C to +50°C
Address range:	1 – 20
Protection class:	2
Protection class:	IP 20
Cable cross-section:	max. 1.5mm ²

